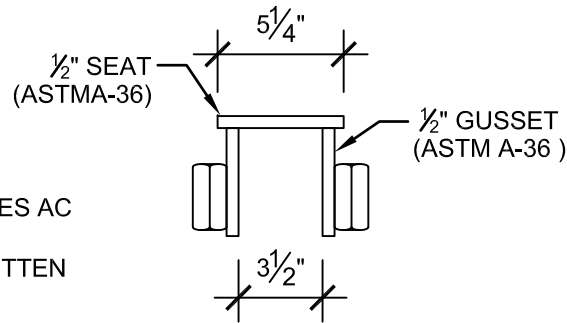
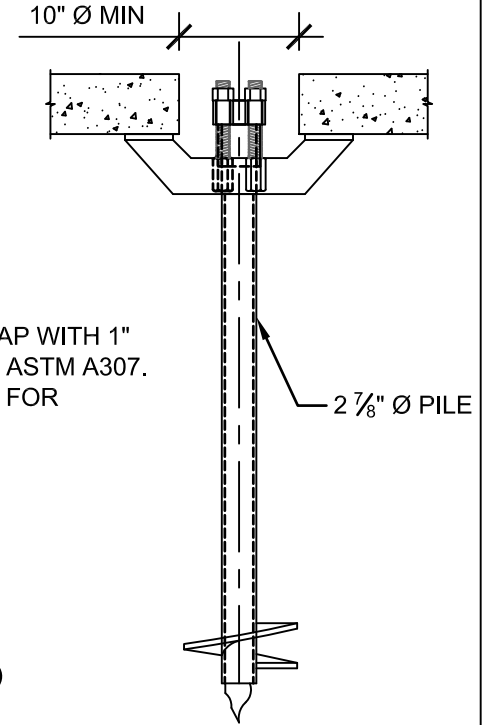
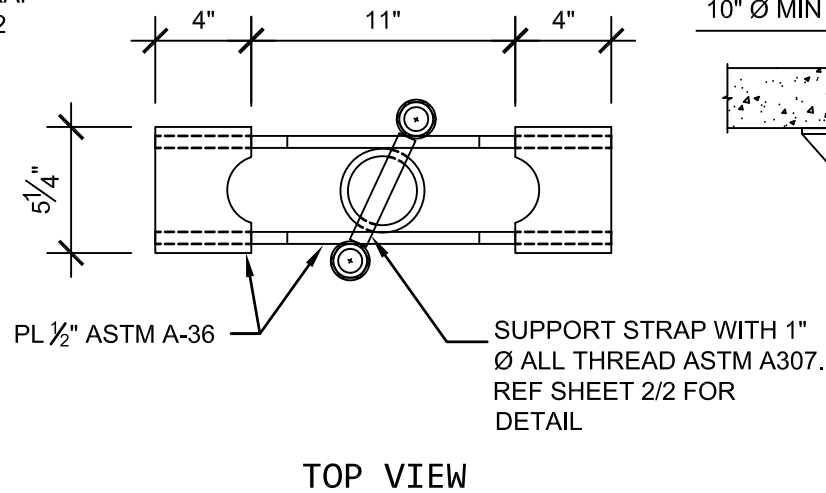
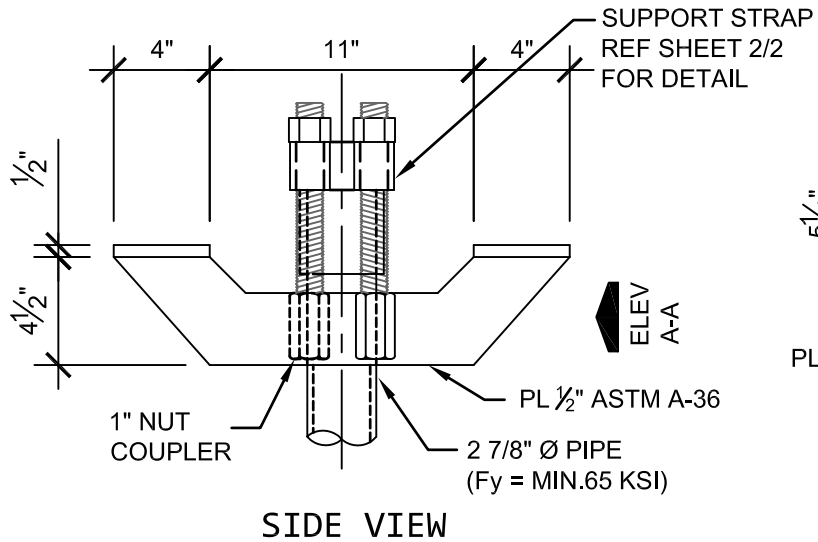


4068 NON-PIVOT HEAVY DUTY SLAB BRACKET



NOTES:

1. POLYETHYLENE COPOLYMER THERMOPLASTIC COATING PER ICC-ES AC 228
2. MANUFACTURER TO HAVE IN EFFECT INDUSTRY RECOGNIZED WRITTEN QUALITY CONTROL FOR ALL MATERIALS AND MANUFACTURING PROCESSES.
3. ALL WELDING IS TO BE DONE BY WELDERS CERTIFIED UNDER SECTION 5 OF THE AWS CODE D1.1.
4. THE CAPACITY OF THE UNDERPINNING SYSTEM IS A FUNCTION OF MANY INDIVIDUAL ELEMENTS, INCLUDING THE CAPACITY OF THE FOUNDATION, BRACKET, PIER SHAFT, HELICAL PLATE, AND BEARING STRATA, AS WELL AS THE STRENGTH OF THE FOUNDATION BRACKET CONNECTION AND THE QUALITY OF THE INSTALLATION OF THE PILE. YOUR ACHIEVABLE CAPACITIES COULD BE HIGHER OR LOWER THAN THOSE LISTED DEPENDING ON THE ABOVE FACTORS.
5. PUNCHING SHEAR OF SLAB MUST BE CHECKED. *PUNCHING SHEAR NORMALLY DETERMINES PILE SPACING.

TYPICAL INSTALLATION DETAIL

ALLOWABLE LOAD CHART

PART NUMBER	DIAMETER OF PILE	ALLOWABLE LOAD CAPACITY
4068	2 7/8"	16.5 KIPS



INTERIOR SLAB BRACKET-HD		CATALOG NO. : SEE TABLES		REV. 1
SCALE 1 1/2" = 1'-0"	DRAWN BY SA	DATE: 03/13/2014	SHEET 1 OF 2	