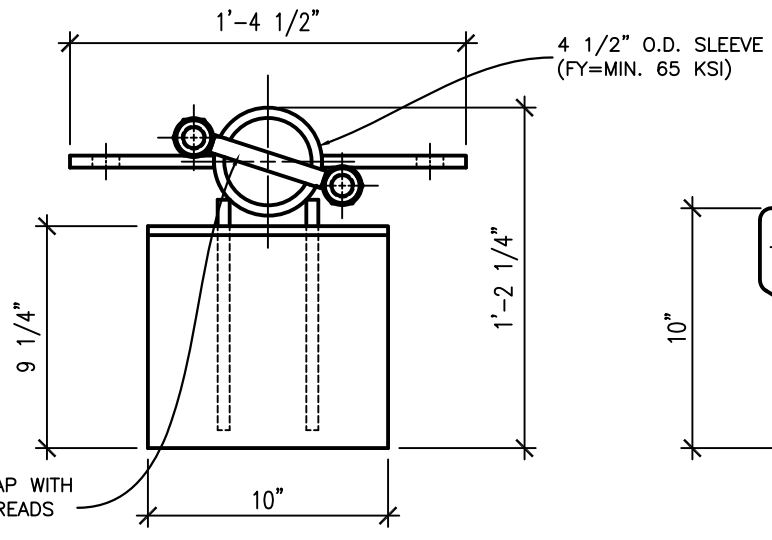
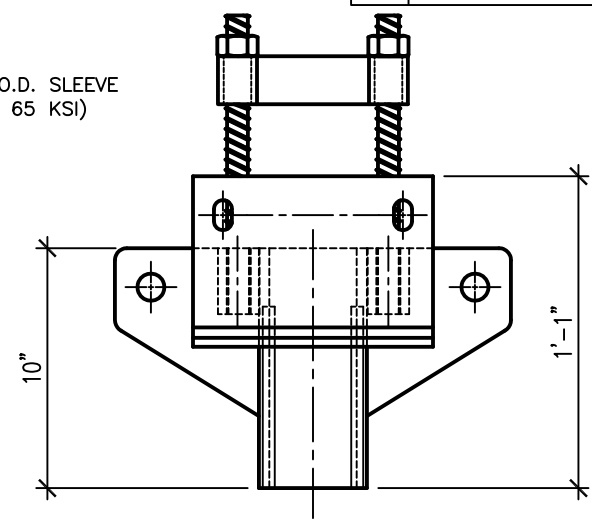


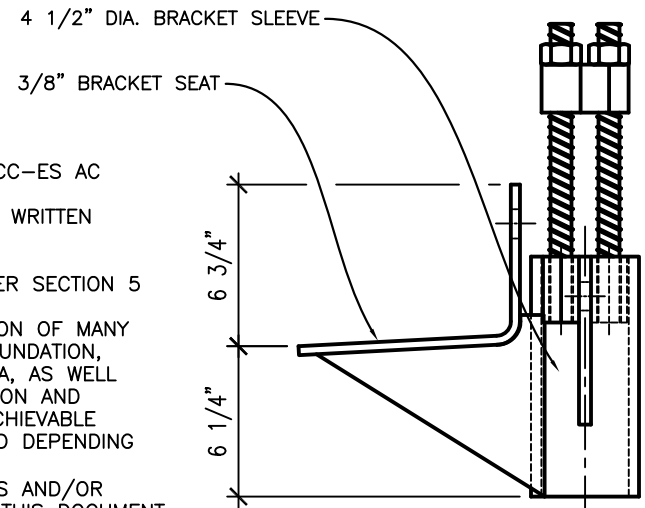
Rev No	Revision note	Date	Signature	Checked



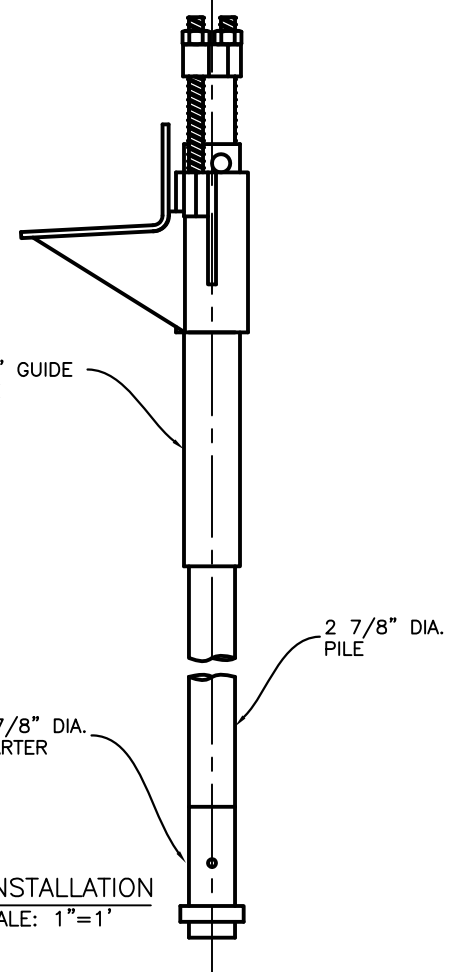
TOP VIEW



FRONT VIEW



SIDE VIEW



TYP. INSTALLATION  
SCALE: 1"=1'

**NOTES:**

1. POLYETHYLENE COPOLYMER THERMOPLASTIC COATING PER ICC-ES AC 228
2. MANUFACTURER TO HAVE IN EFFECT INDUSTRY RECOGNIZED WRITTEN QUALITY CONTROL FOR ALL MATERIALS AND MANUFACTURING PROCESSES.
3. ALL WELDING IS TO BE DONE BY WELDERS CERTIFIED UNDER SECTION 5 OF THE AWS CODE D1.1.
4. THE CAPACITY OF THE UNDERPINNING SYSTEM IS A FUNCTION OF MANY INDIVIDUAL ELEMENTS, INCLUDING THE CAPACITY OF THE FOUNDATION, BRACKET, PIER SHAFT, HELICAL PLATE, AND BEARING STRATA, AS WELL AS THE STRENGTH OF THE FOUNDATION BRACKET CONNECTION AND THE QUALITY OF THE INSTALLATION OF THE PILE. YOUR ACHIEVABLE CAPACITY COULD BE HIGHER OR LOWER THAN THOSE LISTED DEPENDING ON THE ABOVE FACTORS.
5. RAM JACK ENGINEERING HANDBOOK FOR ALLOWABLE VALUES AND/OR CONDITIONS OF USE CONCERNING MATERIAL PRESENTED IN THIS DOCUMENT.
6. ICC-ES RECOGNIZED PER ESR-1854

THIS DRAWING AND ITS CONTENTS ARE CONFIDENTIAL AND THE EXCLUSIVE PROPERTY OF RAM JACK SYSTEMS DISTRIBUTION, LLC. NO PUBLICATION, DISTRIBUTION OR COPIES MAY BE MADE WITHOUT THE EXPRESSED WRITTEN CONSENT OF RAM JACK SYSTEMS DISTRIBUTION, LLC. ALL RIGHTS RESERVED UNDER COPYRIGHT LAWS.



UNLESS OTHERWISE SPECIFIED  
\* DIMENSIONS ARE IN INCHES  
\* TOLERANCES: ANGLE ±1°  
3 PLACE DECIMALS ± .010  
2 PLACE DECIMALS ± .02  
\* REMOVE ALL BURRS AND SHARP EDGES  
\* PARENTHETICAL INFO FOR REF ONLY

HOLE TOLERANCES		
.013	.126	.251
THRU +.004	THRU +.004	THRU +.006
-.001	THRU -.001	THRU -.001
.125	.250	.500
.501	.751	1.001
THRU +.008	THRU +.010	THRU +.012
THRU -.001	THRU -.001	THRU -.001
.750	1.000	2.000

FILE NAME	FILE_NAME	FSCM NO	FSCM_NO	SHEET	SCALE
SIZE	SIZE			SHEET	SCALE
DRAWN	CHECK_DATE			DESIGN_ACTIVITY	
CHECK	CHECK_DATE	CHECKED_BY		SHEETNAME	
APPR.	APPROVAL_DATE			DRAWING_SUBTITLE	
ISSUED	ISSUE_DATE	ISSUED_BY		DWG NO	
REV	REVISION			SHEETNUMBER-NAME	
CONTRACT NO	CONTRACT_NO				