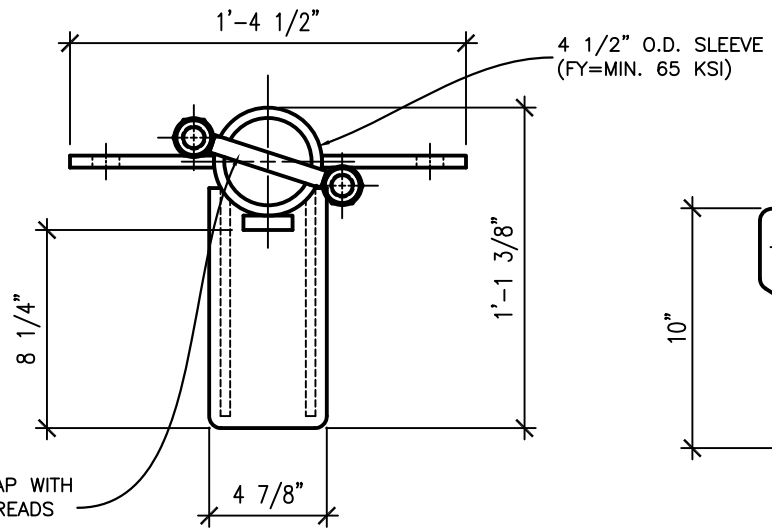
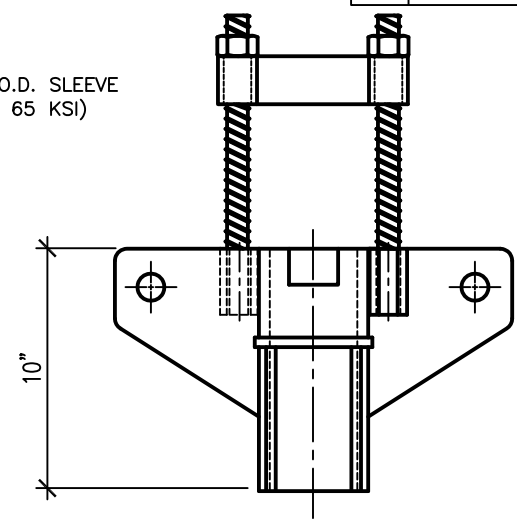


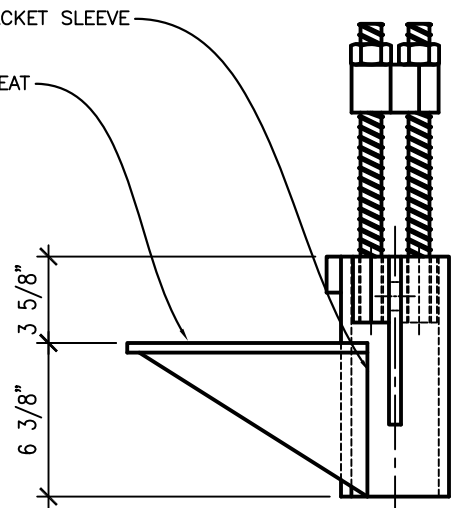
Rev No	Revision note	Date	Signature	Checked



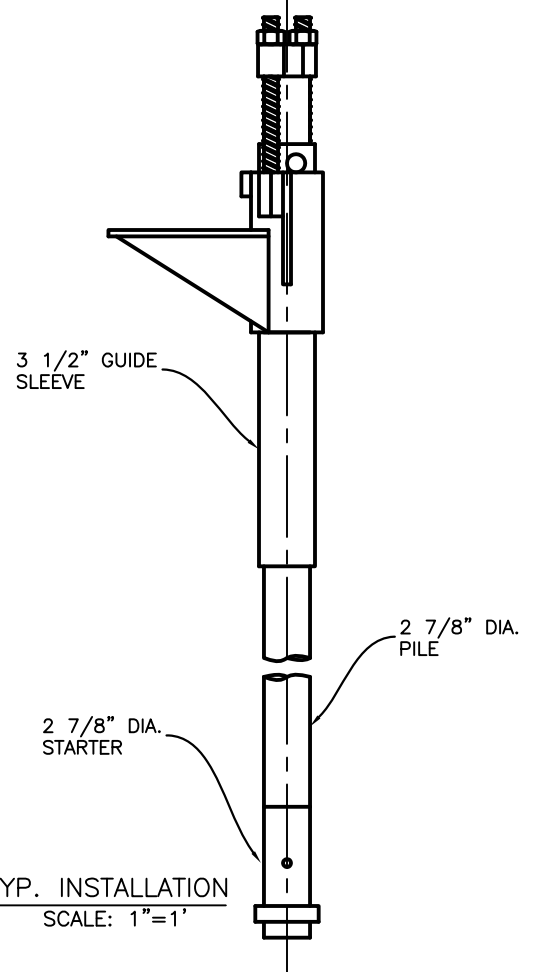
TOP VIEW



FRONT VIEW



SIDE VIEW



TYP. INSTALLATION
SCALE: 1"=1'

FASTENING STRAP WITH 1" DIA. ALL THREADS AND NUTS

NOTES:

1. POLYETHYLENE COPOLYMER THERMOPLASTIC COATING PER ICC-ES AC 228
3. MANUFACTURER TO HAVE IN EFFECT INDUSTRY RECONIZED WRITTEN QUALITY CONTROL FOR ALL MATERIALS AND MANUFACTURING PROCESSES.
4. ALL WELDING IS TO BE DONE BY WELDERS CERTIFIED UNDER SECTION 5 OF THE AWS CODE D1.1.
5. THE CAPACITY OF THE UNDERPINNING SYSTEM IS A FUNCTION OF MANY INDIVIDUAL ELEMENTS, INCLUDING THE CAPACITY OF THE FOUNDATION, BRACKET, PIER SHAFT, HELICAL PLATE, AND BEARING STRATA, AS WELL AS THE STRENGTH OF THE FOUNDATION BRACKET CONNECTION AND THE QUALITY OF THE INSTALLATION OF THE PILE. YOUR ACHIEVABLE CAPACITY COULD BE HIGHER OR LOWER THAN THOSE LISTED DEPENDING ON THE ABOVE FACTORS.
6. RAM JACK ENGINEERING HANDBOOK FOR ALLOWABLE VALUES AND/OR CONDITIONS OF USE CONCERNING MATERIAL PRESENTED IN THIS DOCUMENT.

THIS DRAWING AND ITS CONTENTS ARE CONFIDENTIAL AND THE EXCLUSIVE PROPERTY OF RAM JACK SYSTEMS DISTRIBUTION, LLC. NO PUBLICATION, DISTRIBUTION OR COPIES MAY BE MADE WITHOUT THE EXPRESSED WRITTEN CONSENT OF RAM JACK SYSTEMS DISTRIBUTION, LLC. ALL RIGHTS RESERVED UNDER COPYRIGHT LAWS.



UNLESS OTHERWISE SPECIFIED
* DIMENSIONS ARE IN INCHES
* TOLERANCES: ANGLE ±1°
3 PLACE DECIMALS ± .010
2 PLACE DECIMALS ± .02
* REMOVE ALL BURRS AND SHARP EDGES
* PARENTHETICAL INFO FOR REF ONLY

HOLE TOLERANCES		
.013 THRU +.004	.126 THRU +.004	.251 THRU +.006
-.001	-.001	-.001
.125	.250	.500
.501 THRU +.008	.751 THRU +.010	1.001 THRU +.012
-.001	-.001	-.001
.750	1.000	2.000

FILE NAME	FILE_NAME	FSCM NO	FSCM_NO
SIZE	SIZE		
DRAWN	CHECK_DATE		
CHECK	CHECK_DATE	CHECKED_BY	
APPR.	APPROVAL_DATE		
ISSUED	ISSUE_DATE	ISSUED_BY	
REV	REVISION		
CONTRACT NO	CONTRACT_NO		

SHEET	SCALE
SHEET	SCALE
DESIGN_ACTIVITY	
SHEETNAME	
DRAWING_SUBTITLE	
DWG NO	
SHEETNUMBER-NAME	