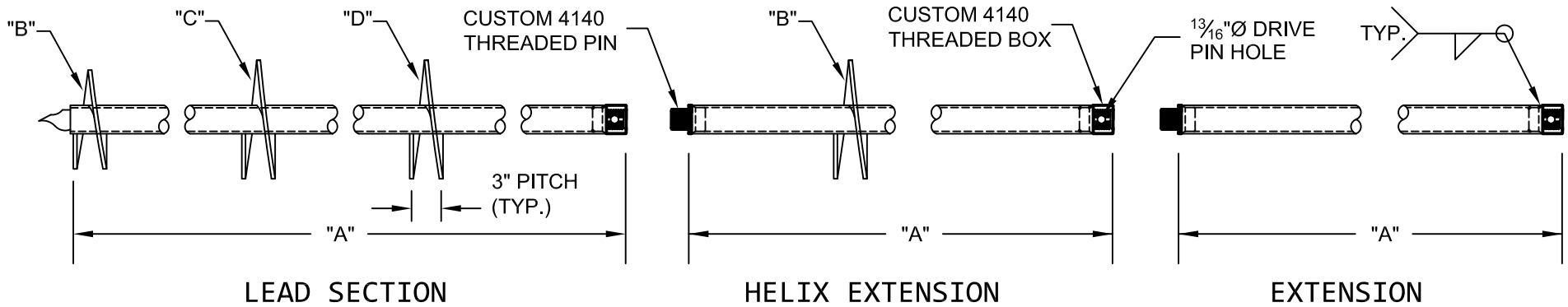


# 2 7/8"Ø HELICAL PILES AND ANCHORS - THREADED CONNECTION



LEAD SECTION TABLE				
CAT. #	"A"	"B"	"C"	"D"
4368	5'-0	10"	12"	
4370	7'-0	10"	12"	
4367	7'-0	14"	16"	
4062	5'-0	8"	10"	
4050	7'-0	12"	14"	
4371	7'-0	10"	12"	14"
4360	5'-0	8"	10"	12"
5280	10'-0	6"	8"	

\* MULTI-HELIX ARE SPACED 3 DIAMETERS OF THE LOWER HELIX.

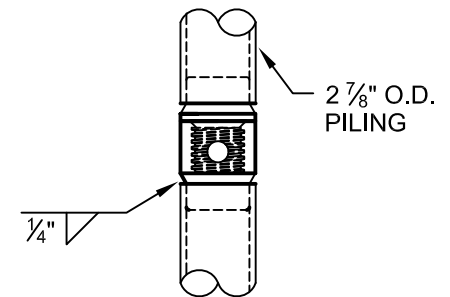
HELIX EXTENSIONS		
CAT #	"A"	"B"
4385.12	5'-0	12"
4387.12	7'-0	12"
4385.14	5'-0	14"
4387.14	7'-0	14"

EXTENSIONS	
CAT #	"A"
4385	5'-0
4387	7'-0
6510	10'-0

STRENGTH RATING	
MAX. TORQUE STRENGTH -	8,000 FT-LB
ULTIMATE CAPACITY (TENS/COMP) -	72 KIP*
ALLOWABLE CAPACITY (TENS/COMP) -	36 KIP**
* BASED ON A TORQUE FACTOR (Kt) = 9	
** W/ SAFETY FACTOR OF 2 BEING APPLIED	
*** RECOGNIZED BY ICC-ES IN ESR-1854	

## NOTES:

- POLYETHYLENE COPOLYMER THERMOPLASTIC COATING PER ICC-ES AC 228.
- LEAD AND EXTENSION SECTION AND PILOT POINT LENGTHS ARE NOMINAL. PILOT POINTS ARE 3".
- SHAFT MATERIAL IS 2 7/8"Ø, 0.217" WALL, MINIMUM Fy=65 KSI AND Fu=80 KSI.
- HELIX BLADE MATERIAL IS HOT ROLLED, MINIMUM Fy=50 KSI AND Fu=80 KSI CARBON STEEL. PLATE THICKNESS IS AVAILABLE IN 3/8" AND 1/2" THICKNESSES.
- CONNECTORS ARE 2 7/8" Ø, CUSTOM 4140 INTERNAL THREADED COUPLINGS
- NOMINAL SPACING BETWEEN HELICAL PLATES IS THREE TIMES THE DIAMETER OF THE LOWER HELIX.
- MANUFACTURER TO HAVE IN EFFECT INDUSTRY RECOGNIZED WRITTEN QUALITY CONTROL FOR ALL MATERIALS AND MANUFACTURING PROCESSES.
- ALL WELDING IS TO BE DONE BY WELDERS CERTIFIED UNDER SECTION 5 OF THE AWS CODE D1.1.
- RECOGNIZED BY ICC-ES IN ESR-1854. THE REPORTED ALLOWABLE CAPACITIE MAY VARY BASED ON THE SOIL CONDITION AND PILE APPLICATION AS DESCRIBED IN ESR-1854.



CONNECTION DETAIL



DWG. NO. : 2875.03	CATALOG NO. : SEE TABLES	REV. 1
SCALE 3/4" = 1'-0	DRAWN BY DLW	DATE: 06/06/2013
		SHEET 1 OF 1