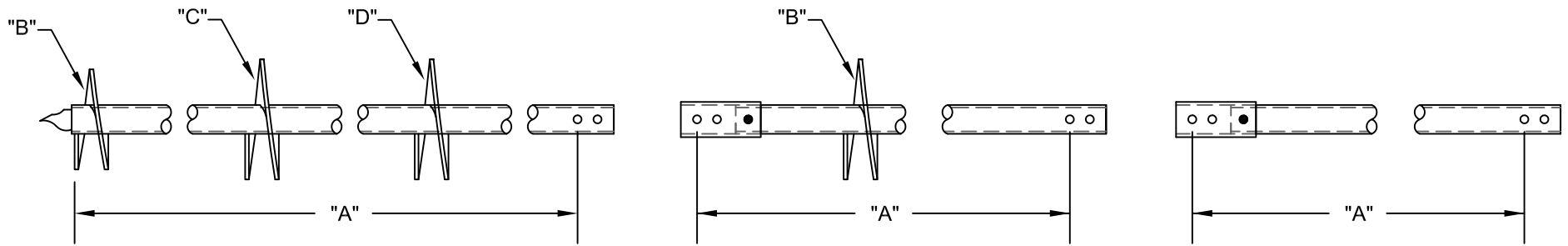


2 7/8"Ø HELICAL PILES AND ANCHORS - EXTERNAL CONNECTION



LEAD SECTION

HELIX EXTENSION

EXTENSION

LEAD SECTION TABLE				
CAT. #	"A"	"B"	"C"	"D"
6142	5'-0	10"	12"	
6143	7'-0	10"	12"	
6146	7'-0	14"	16"	
6144	5'-0	12"	14"	
6145	7'-0	12"	14"	
6148	7'-0	10"	12"	14"
6147	7'-0	8"	10"	12"
6127	2'-0	10"		

HELIX EXTENSIONS		
CAT #	"A"	"B"
6505.12	5'-0	12"
6507.12	7'-0	12"

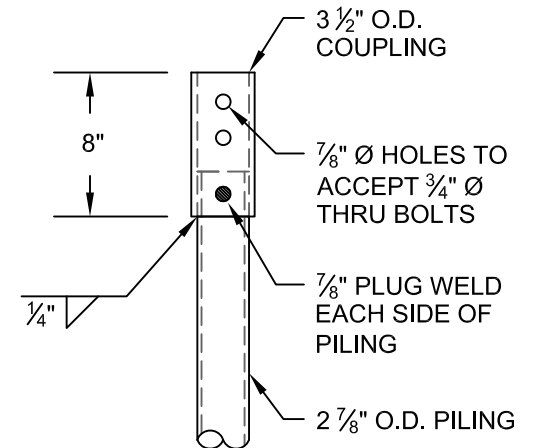
EXTENSIONS	
CAT #	"A"
6505	5'-0
6507	7'-0
6510	10'-0

MECHANICAL TORQUE RATING - 5,500 FT-LB
 ULTIMATE CAPACITY (TENS/COMP) - 49.5 KIP*
 ALLOWABLE CAPACITY (TENS/COMP) - 24.75 KIP*
 *BASED ON A TORQUE FACTOR (Kt) = 9

* MULTI-HELIX ARE SPACED 3 DIAMETERS OF THE LOWER HELIX.

NOTES:

1. POLYETHYLENE COPOLYMER THERMOPLASTIC COATING PER ICC-ES AC 228.
2. LEAD AND EXTENTION SECTION AND PILOT POINT LENGTHS ARE NOMINAL. PILOT POINTS ARE 3".
3. SHAFT MATERIAL IS 2 7/8"Ø, 0.217" WALL, MINIMUM Fy=65 KSI AND Fu=80 KSI.
4. HELIX BLADE MATERIAL IS HOT ROLLED, MINIMUM Fy=50 KSI AND Fu=80 KSI CARBON STEEL. PLATE THICKNESS IS AVAILBLE IN 3/8" AND 1/2" THICKNESSES.
5. CONNECTORS ARE 3 1/2" Ø, 0.254" WALL, MINIMUM Fy=65 KSI AND Fu=80KSI
6. NOMINAL SPACING BETWEEN HELICAL PLATES IS THREE TIMES THE DIAMETER OF THE LOWER HELIX.
7. MANUFACTURER TO HAVE IN EFFECT INDUSTRY RECOGNIZED WRITTEN QUALITY CONTROL FOR ALL MATERIALS AND MANUFACTURING PROCESSES.
8. ALL WELDING IS TO BE DONE BY WELDERS CERTIFIED UNDER SECTION 5 OF THE AWS CODE D1.1.
9. ALL COUPLING BOLTS TO BE 3/4" Ø, SAE J429 GRADE 5 BOLTS.



**CONNECTION
DETAIL**



DWG. NO. : 2875.03		CATALOG NO. : SEE TABLES		REV. 1
SCALE 3/4" = 1'-0"	DRAWN BY DLW	DATE: 03/26/08	SHEET 1 OF 1	