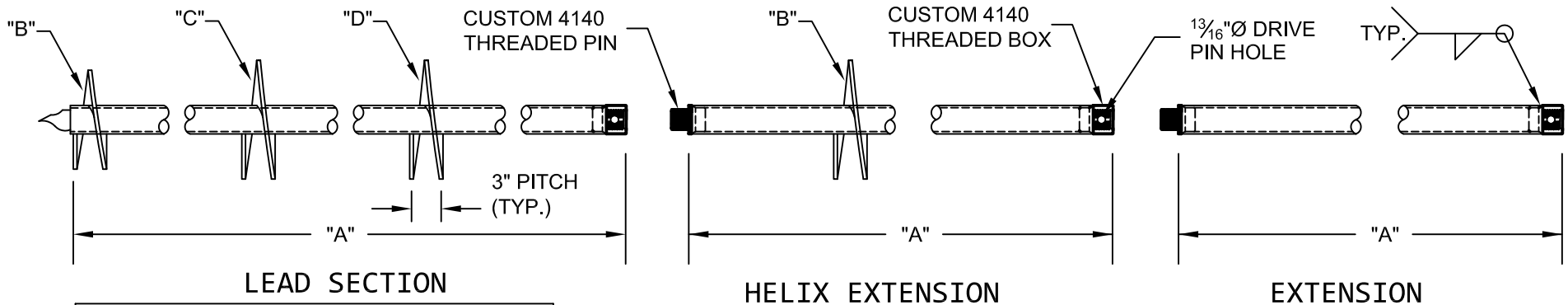


2 3/8"Ø HELICAL PILES AND ANCHORS - THREADED CONNECTION



LEAD SECTION TABLE

CAT. #	"A"	"B"	"C"	"D"
4322	5'-0	8"	10"	
4324	7'-0	8"	10"	
4330	5'-0	10"	12"	
4332	7'-0	10"	12"	
4348	2'-0	8"		
4337	5'-0	8"	8"	
4341	7'-0	8"		
4350	2'-0	10"		
4351	3'-6	10"		
4342	5'-0	10"		
4343	7'-0	10"		
4352	3'-6	12"		
4344	5'-0	12"		
4345	7'-0	12"		

HELIX EXTENSIONS

CAT #	"A"	"B"
4315.12	5'-0	12"

EXTENSIONS

CAT #	"A"
4308	2'-0
4310	3'-6
4315	5'-0
4317	7'-0

EXTENSION

STRENGTH RATING

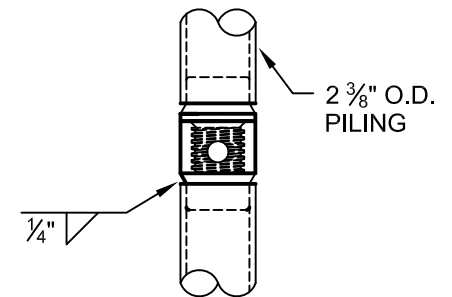
MAX. TORQUE STRENGTH - 4,000 FT-LB
 ULTIMATE CAPACITY (TENS/COMP) - 40 KIP*
 ALLOWABLE CAPACITY (TENS/COMP) - 20 KIP**

* BASED ON A TORQUE FACTOR (Kt) = 10
 ** W/ SAFETY FACTOR OF 2 BEING APPLIED

* MULTI-HELIX ARE SPACED 3 DIAMETERS OF THE LOWER HELIX.

NOTES:

1. POLYETHYLENE COPOLYMER THERMOPLASTIC COATING PER ICC-ES AC 228.
2. LEAD AND EXTENSION SECTION AND PILOT POINT LENGTHS ARE NOMINAL. PILOT POINTS ARE 3".
3. SHAFT MATERIAL IS 2 3/8"Ø, 0.190" WALL, MINIMUM Fy=65 KSI AND Fu=80 KSI.
4. HELIX BLADE MATERIAL IS HOT ROLLED, MINIMUM Fy=50 KSI AND Fu=80 KSI CARBON STEEL. PLATE THICKNESS IS AVAILABLE IN 3/8" AND 1/2" THICKNESS.
5. CONNECTORS ARE 2 3/8" Ø, CUSTOM 4140 INTERNAL THREADED COUPLINGS
6. NOMINAL SPACING BETWEEN HELICAL PLATES IS THREE TIMES THE DIAMETER OF THE LOWER HELIX.
7. MANUFACTURER TO HAVE IN EFFECT INDUSTRY RECOGNIZED WRITTEN QUALITY CONTROL FOR ALL MATERIALS AND MANUFACTURING PROCESSES.
8. ALL WELDING IS TO BE DONE BY WELDERS CERTIFIED UNDER SECTION 5 OF THE AWS CODE D1.1.



CONNECTION DETAIL

